



Feilden Foundation 2022 Annual Newsletter

Green City Kigali Masterplan

We set up the Feilden Foundation 16 years ago in Richard Feilden's memory and over the years there has been a steady increase in the scale and diversity of the work we have been doing. Our knowledge of this area of the world certainly helped

FCBS win a very important project to design a major extension to the city of Kigali. The project, described on the next page will try to solve some of the key problems of rapid urbanisation, combined with some of the effects of the climate and biodiversity crises.

Our task is to re-define the characteristics of traditional Rwandan communities in a higher density development to make a new home for what will be the first generation of urbanised Rwandans.

Peter Clegg, Chair of Trustees

SCHOOL DESIGN GUIDE

Another project we are about to embark upon is an updated version of the Uganda Schools Design Guide that we first published ten years ago.

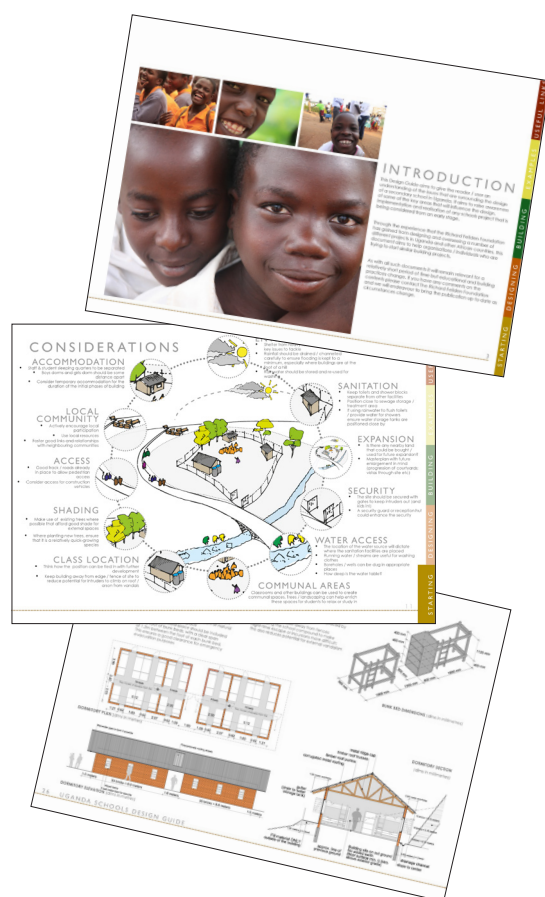
Emma Pandian and Gracious Muzamhindo have applied for an RIBA research grant to help us to define the key characteristics of schools design for the countries in East Africa where we work, Rwanda, Burundi and Uganda. We are also looking for other funding contributions to what we hope will become a definitive guidance document.

We will be working alongside Mike Kironde, one of our trustees, who is the National Chairperson for the Proprietors of Private Educational Institutions Association in Uganda (PPIEAU), who also have strong links to the Government Department for Education. We will also be working with local school architects

distilling their experience and publishing examples of best practice.

With a complete lack of any official guidance on the specification and design of school buildings we hope to fill a gap in the requirement for design guidance that will help all those who seek to develop or expand schools and provide advice to local architects and engineers.

The new guide will be based on the Climate Responsive Design Guide that was produced in conjunction with the Belgian Development agency ENABEL and has subsequently been turned into a web based teaching tool for universities in East Africa.



COMMUNITY OF PRACTICE (COP) + WASH SYSTEMS, KABALE

WASHaLOT systems installed for 11 schools in Kabale

Feilden Foundation donated money for the installation of WASHaLOT systems to the 11 schools of the Community of Practice initiative.

The final steps of the installation process took place mid January for ten out of the eleven schools and now all have working WASHaLOT systems, with the final school hoping to receive one in the near future. The systems promote communal hand washing before eating, allowing multiple pupils to wash their hands at the same time. The systems are also designed to release water manually when touched and thereby reduce water consumption.

The decision to help with the implementation of the WASHaLOT systems came from an extensive report carried out by our field officer Paul Kimera about the water, sanitation and hygiene technologies of each school. Working with trustee Neil Harvey they then came up with a plan of how we could best help each school improve these facilities.

As well as these systems the funding covers all schools to also receive water treatment components which we hope will be installed next month.



The Community of Practice (COP) is an initiative set up by the Feilden Foundation and All Our Children to provide an educational offer alongside our architectural offer. COP provides an exemplar model of ways in which a community of schools could work collaboratively to achieve improvements in the areas of active teaching and learning, behavioural management and school environment and sanitation. Alongside these theoretical approaches, the Feilden Foundation are proud to have been able to help provide some of the physical equipment needed to assist with the sanitation side of the programme.

COP TRAINING

Earlier in the year whole staff training workshops took place in ten of the schools.

The 2.5-hour workshops looked at how the Behaviour Management and Relationships Policy 2021 could be implemented in their schools and how they could support a 'rigid' parent/teacher/guardian to adopt the policy and adapt a non-violent approach to behaviour management.



Teachers enjoyed the process and were encouraged to work together. 223 certificates have been printed and handed out to those who have completed the workshops.

Ahead of the Project Evaluation in November 2022, the Kabale COP Project organised training workshops for student leaders which attracted 12 senior select student leaders from each of the 10 COP schools and therefore had a total 120 students trained on the Behaviour Management and Relationships Policy (BMRP) 2021. The policy stipulates the implementation of non-violent Behaviour Management Approaches in schools and is clearly opposed to the use of any form of violence and corporal punishment when disciplining children.

As a result of the COP initiative there are already positive outcomes happening in each school. Active teaching and learning group work has become compulsory and children are being motivated and want to attend school and learn. With 45-60 in a classroom, they can pair up to work or, if appropriate, they can be taken outside. This is highly encouraged in the new curriculum – how children can learn from each other.

The next step for COP is to carry out a full evaluation of the programme. Due to issues surrounding covid and school lockdowns, as well as recent teacher strikes, this final evaluation is currently on hold. We hope for this to continue very soon, providing us with a report on how and where the initiative has been successful and any lessons learned.

We aim to continue this initiative with another group of schools and are currently setting out the initial steps to do so.

GREEN CITY KIGALI

Feilden Clegg Bradley Studios has been selected to develop the Green City Kigali Masterplan and detailed designs for the pilot phase. The selection was done in partnership with the Royal Institute of British Architects.

FCBStudios will head up an international team of consultants to develop a new pattern of settlement to build homes for low and middle income residents, as well as providing communities and livelihoods to accommodate the sustainable expansion of urban Kigali, a first of its kind in Africa.

This is an extraordinary opportunity to address one of the major global environmental challenges we face in the next 50 years – the projected mass urbanisation and population growth across the African continent.

The bringing together of innovative, sustainable, viable, affordable, and culturally relevant solutions has been at the heart of FCBStudios approach as it has to be realistically replicable.

FCBStudios will be bringing together a team of experts to address these challenges, as well as bringing forward their long-term commitment to East Africa through the research and charity work of the Feilden Foundation.

FCBStudios are collaborating with regional architects Light Earth Designs, A Studio Space and Studio FH Architects and with multidisciplinary Rwanda-based consultants FBW and Turner and Townsend as cost consultants. Their international team includes Grant Associates, AKTII and Atelier Ten.



New Generation have a new site and have raised 60k to build small retail units on the plot.

The proposal is to construct a simple 6x6m concrete frame and slab that will allow a multitude of uses, including shops, event spaces, health clinics, cafés, gyms, shared work hubs etc. The block can be extended horizontally and vertically, with a demountable metal roof and modular infill panels.

By providing a mixed-use building with retail, workplaces and eateries, it will create a community of people who will work, visit and stay at the new destination to shop, socialise, interchange ideas, meet clients etc.

Immediate funding is provided for 1 or 2 commercial units which will fund the other two buildings.

The buildings will be single storey with the potential to build up to 3-4 storeys high over time.

The Manifesto for Climate Responsive Design is now an online resource where experts can share their knowledge. You can access via this link

climate-design.org/

RUBENGERA TECHNICAL SCHOOL

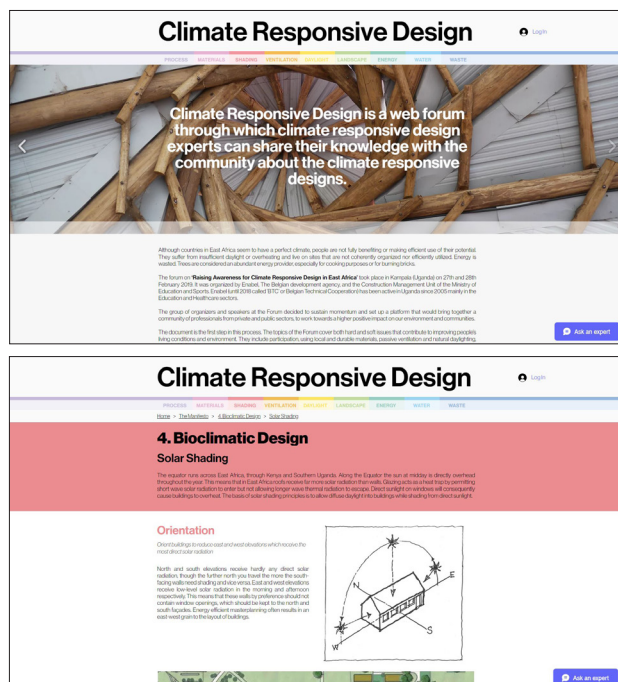
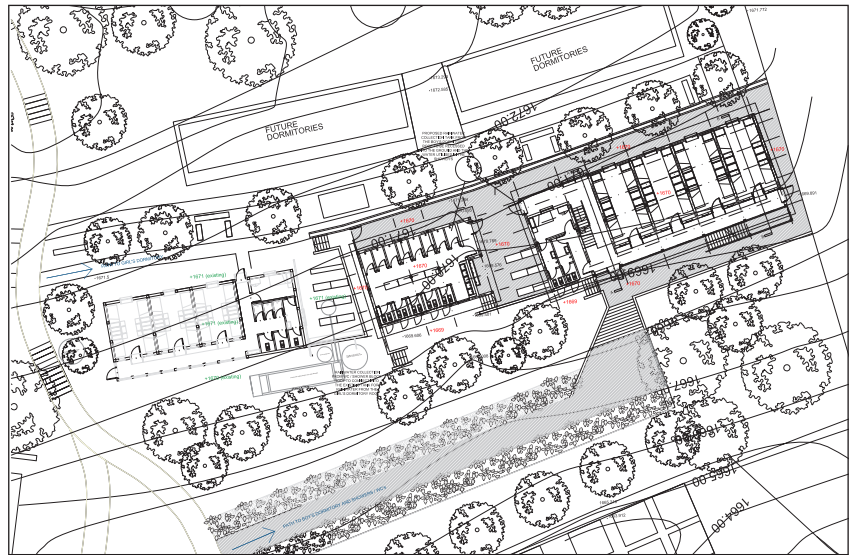
As part of a wider masterplan for the school, the next phase at Rubengera Technical School (TSS) in Rwanda is currently underway.

Working with Buro Happold, early design work has been undertaken to design two new buildings for the school. The main two storey dormitory building will provide accommodation for sixty-four boys, and a separate single storey building will provide showers and sanitary provision for the boys. These buildings will sit adjacent to the recently completed twenty-four bed girl's dormitory building and are located on an east-west orientation, altering the levels to break down the massing and impact of the building

on the site whilst maximising the views out.

The boy's dormitory will have a concrete frame with brick infill on the ground floor and a lightweight timber first floor showcasing the use of the Eucalyptus timber structures being developed at the school, utilising their Timbaho (Eucalyptus laminated 'I' beams) for the roof structure. Deep roof overhangs have been used to reduce solar gain and overheating whilst providing a covered external walkway with built in timber benches between the dormitories.

Currently costs are being obtained for both buildings and the plan is to start on site after funding has been secured.



As always we extend our gratitude to you - our friends and entire support network, for your continued interest in FF activities - your support is hugely appreciated.

FCBStudios kindly support our administrative activities, but we rely on the abundant time and expertise given by our volunteers in addition to donations made generously by our long-standing supporters to carry out the breadth of work we do in East Africa. 100% of donations received go towards building projects or supporting education for African children. We're sure you agree the impact for local communities and children is worthy. If you would like to make a donation, please visit our website, or contact us at:

info@feildenfoundation.org.uk

[@feildenfoundation](https://www.instagram.com/feildenfoundation)

[@FeildenFoundation](https://www.facebook.com/FeildenFoundation)

All cheques payable to The Feilden Foundation.
Please send to Bath Brewery, Toll Bridge Road, Bath, BA1 7DE.